



rkkp

regionernes kliniske kvalitetsudviklingsprogram

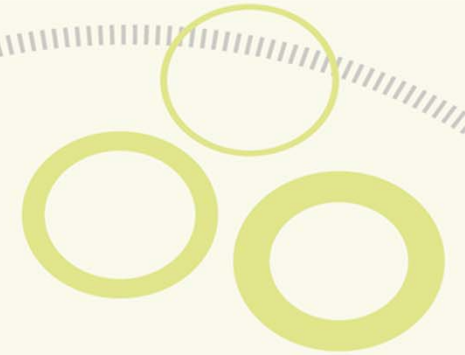
Brugen af kliniske kvalitetsdata

- til gavn for morgendagens behandling

Direktør Jens Winther Jensen

Regionernes Kliniske Kvalitetsudviklingsprogram (RKKP)

Danske Kræftforskningsdage 2019 Odeon Odense



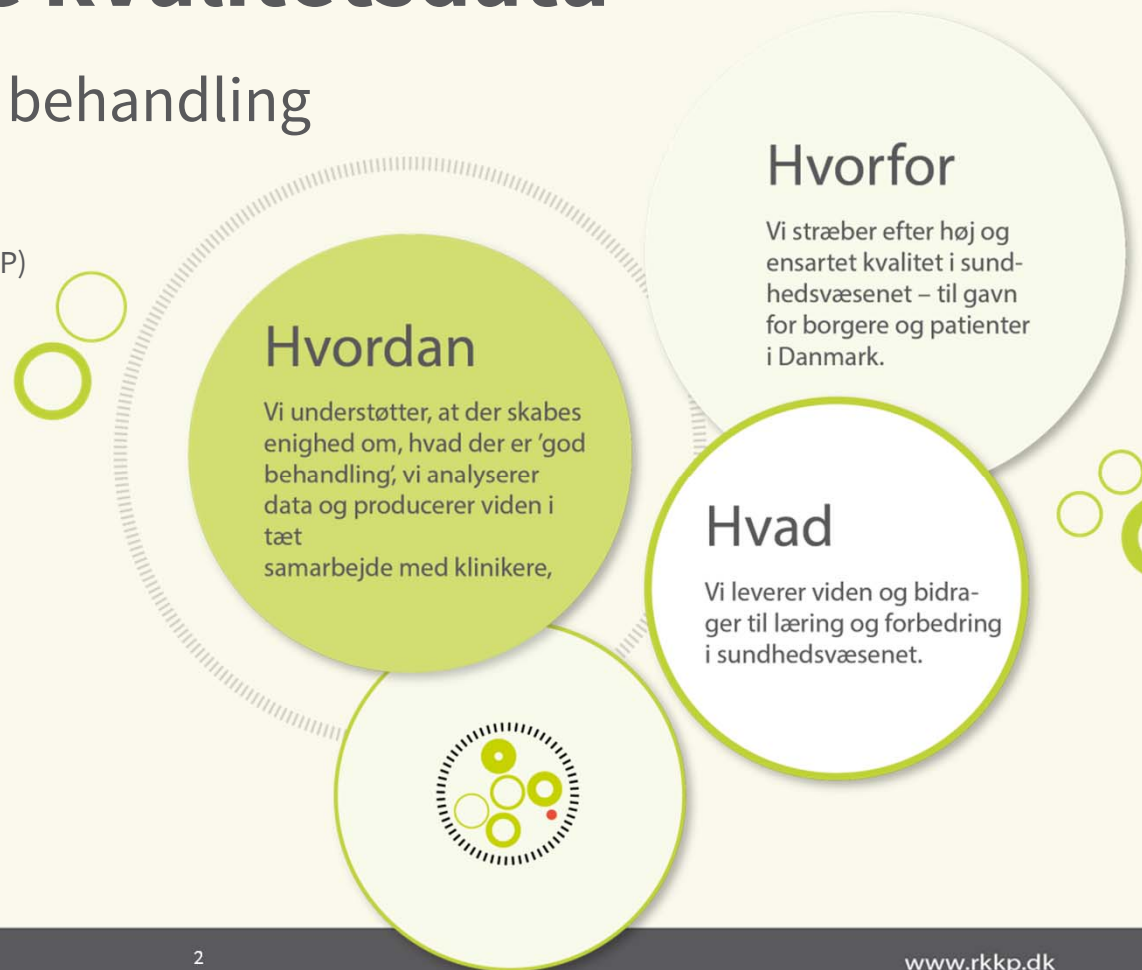
Brugen af kliniske kvalitetsdata

- til gavn for morgendagens behandling

Direktør Jens Winther Jensen

Regionernes Kliniske Kvalitetsudviklingsprogram (RKKP)

Danske Kræftforskningsdage 2019 Odeon Odense



Hvordan sikrer vi at patienterne får den bedst mulige behandling?



- Kvalitet
- Forskningspotentiale
- RKKP strategi

Perspektiv

Fremtiden er højopløselig



Den faglige udvikling i sundhedsvæsenet vil i fremtiden på den ene eller anden måde opstå gennem sundhedsIT





Bedre lægemiddel overvågning v. Lægemiddelstyrelsen

Fælles regionale fase IV initiativer

Genomcenter og regionale datastøttecentre

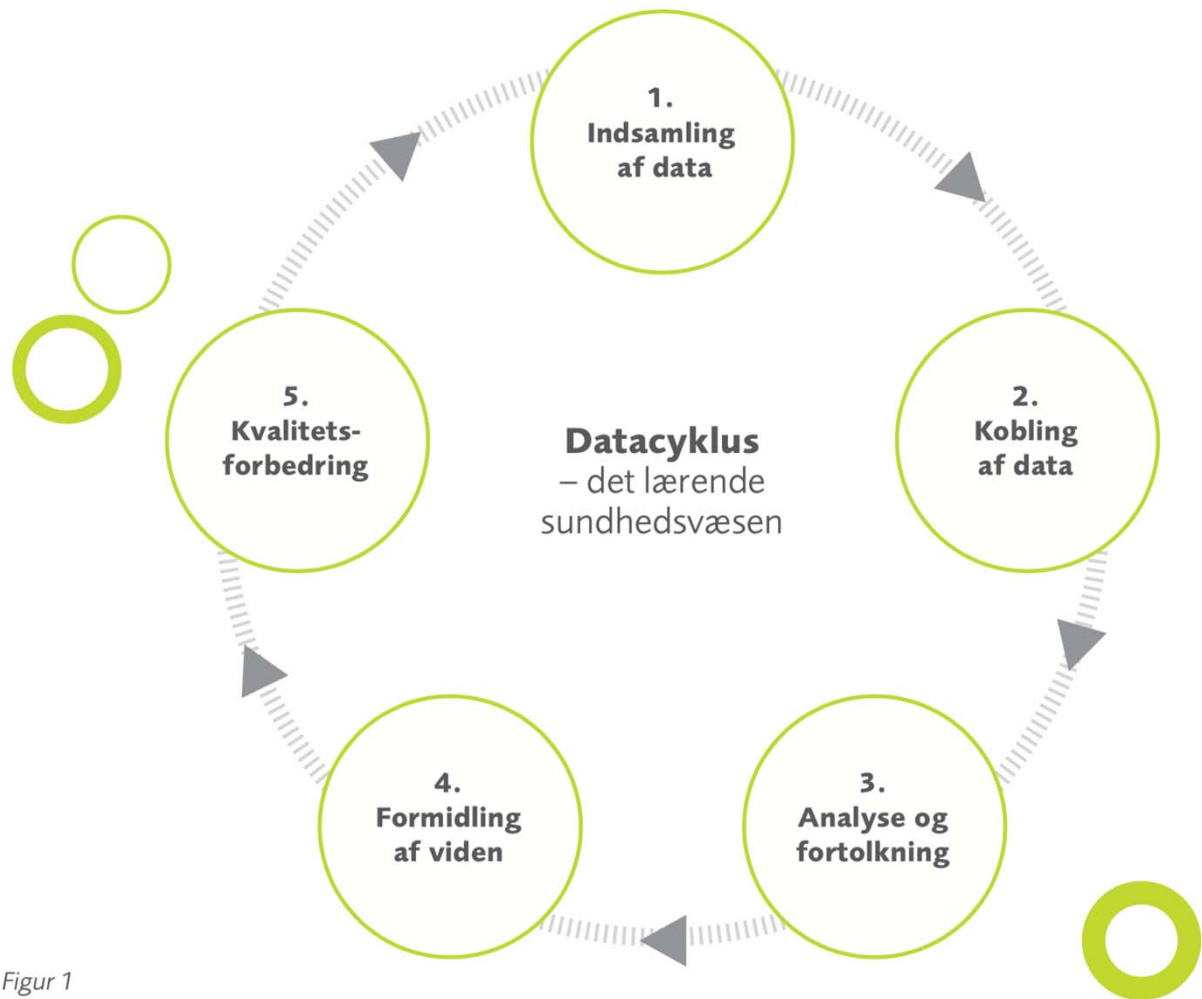
RKKPs strategi 2019 – 2022

Sunddataprogram (LPR3)

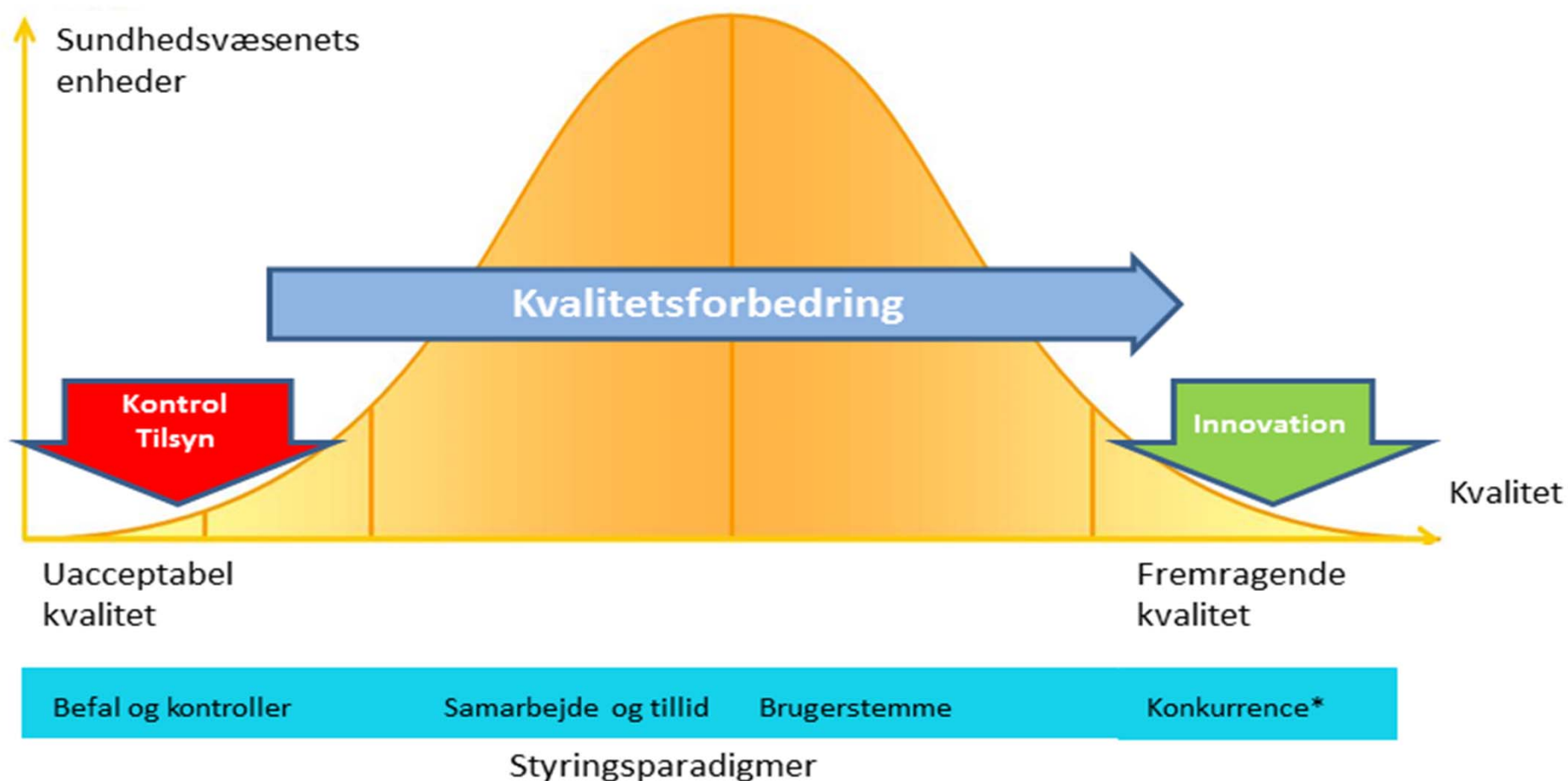
EPJ system investeringer

Det lærende sundhedsvæsen

systematisk indsamling af og analyse af data, med henblik på at opnå viden til et bedre sundhedsvæsen



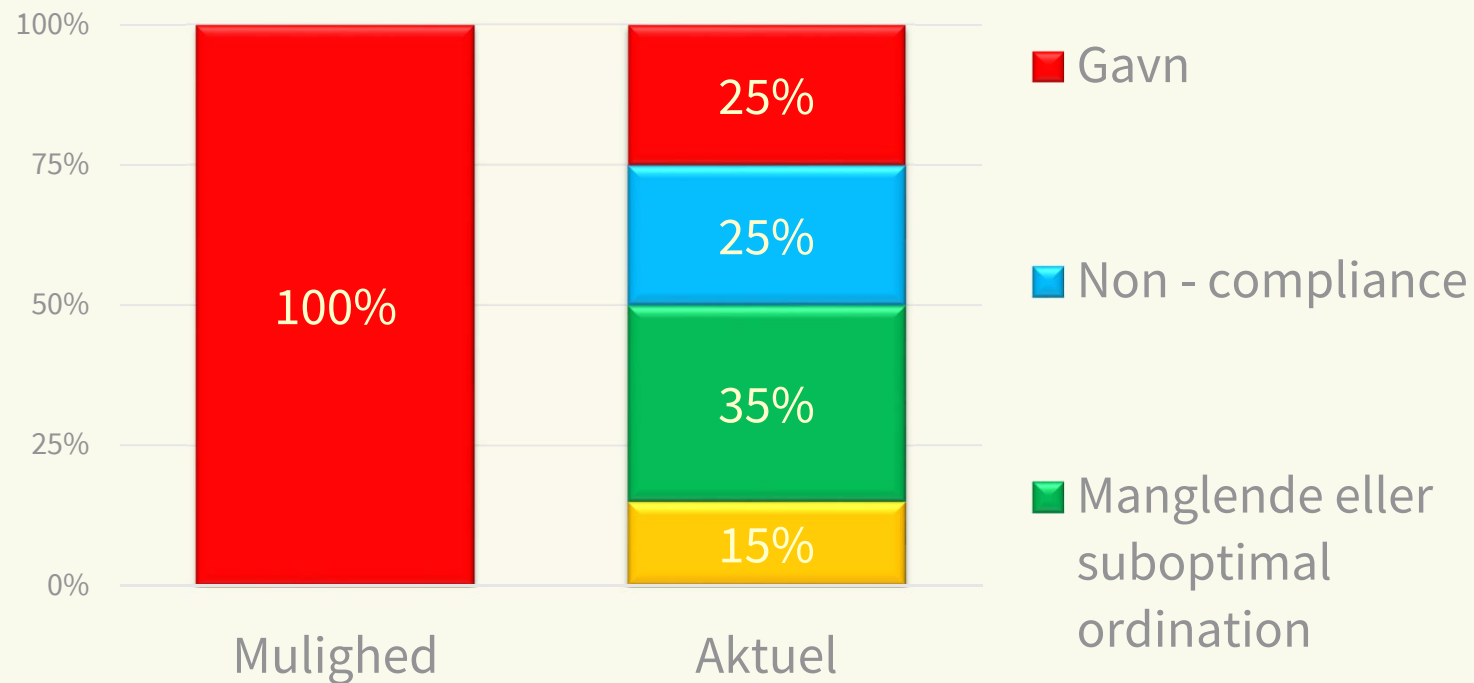
Figur 1
Datacyklus – det lærende sundhedsvæsen



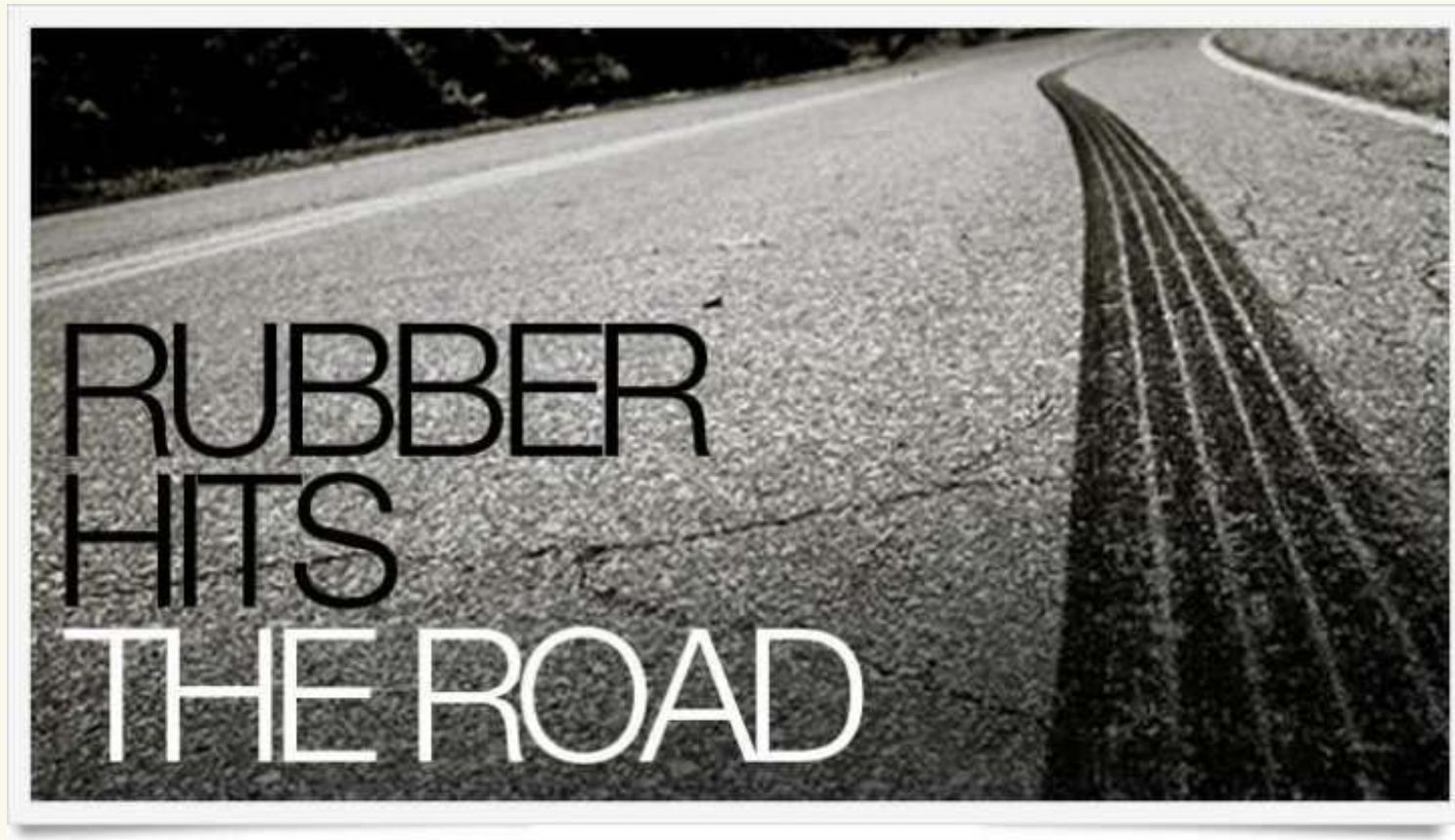
* Konkurrenceparadigmet kan have relevans, når det bruges til at identificere spydspidserne for at andre kan lære af dem, se afsnit om benchmarking, side xx

Mistede muligheder

Hypotetiske data f.eks. en medicin case



Krydspunktet mellem forskning, politik og praksis

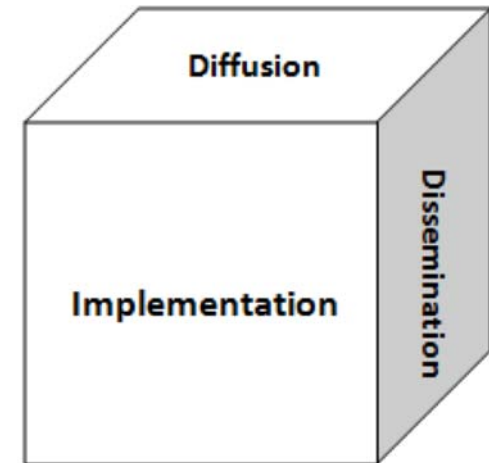




DIFFUSION: “letting it happen”

DISSEMINATION: “helping it happen”

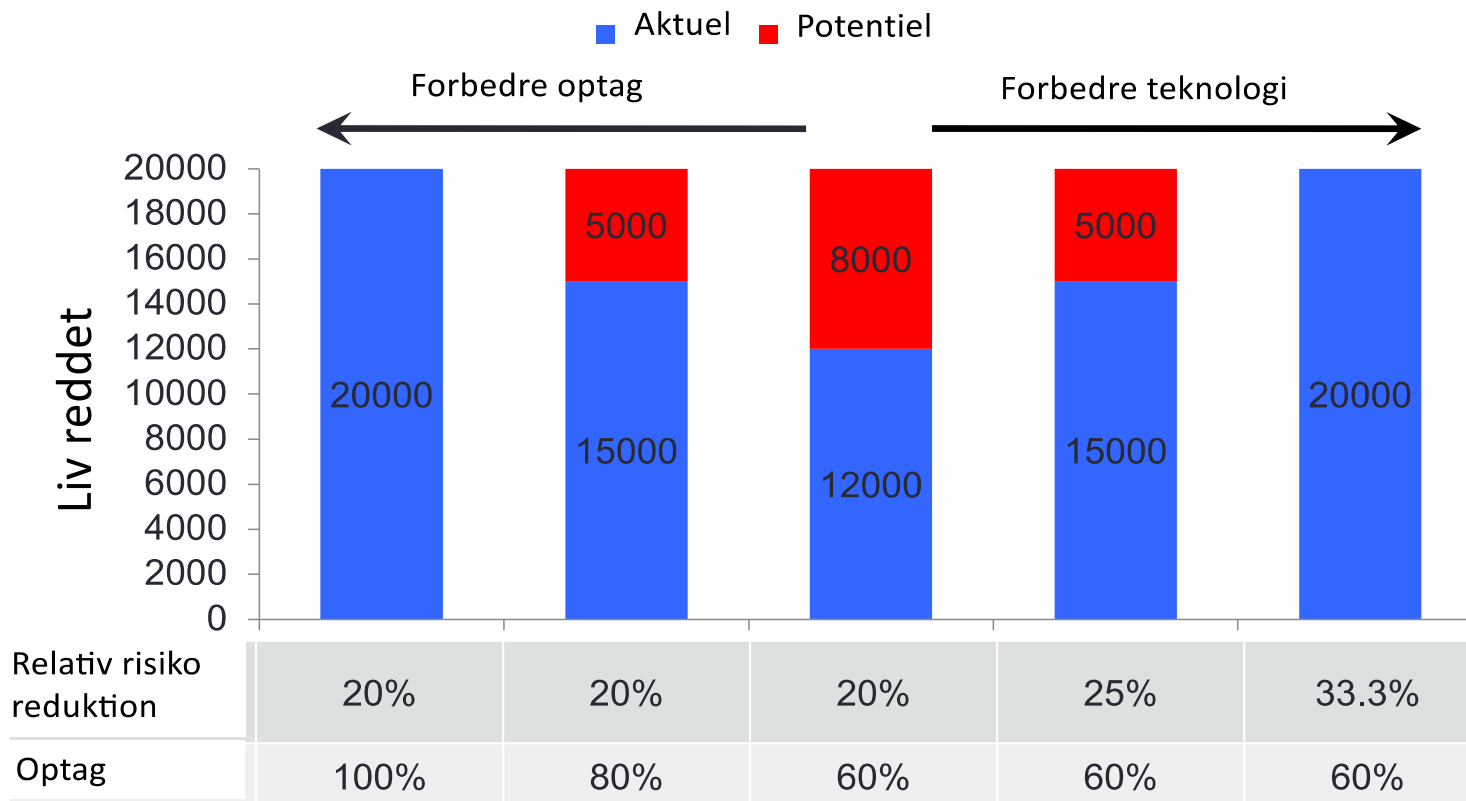
IMPLEMENTATION: “making it happen”



SOURCE: <http://nirn.fpg.unc.edu/learn-implementation/implementation-defined>

Forbedring af optag vs forbedring af teknologi

Hypotetisk kohorte af patienter med en sygdom som dræber 100.000/år



Woolf and Johnson. Ann Family Med 2005; 3: 545.

Niteesh K. Choudhry, MD, PhD
Harvard Medical School

IMPLEMENTATION RESEARCH

The scientific study of methods to promote the systematic uptake of clinical research findings and other evidence-based practices into routine practice, and hence to improve the quality (effectiveness, reliability, safety, appropriateness, equity, efficiency) of health care.

Improvement science, Health service research, Translational research

SOURCE: Eccles et al. An implementation research agenda. *Implementation Science* 2009, 4:18

Implementation Research

- Real-world clinical research, often referred to as effectiveness or outcomes research, does not then guarantee the successful translation of knowledge into practice.
- There is a growing awareness that studies on comparative and cost effectiveness, which identify practices that will maximize quality and value, require companion work on implementation research to assure that current evidence is ultimately implemented into routine clinical practice and health policy.
- Qualitative, quantitative, and mixed research methods that address the facilitators and barriers to the translation of evidence into practice

Academy Health 2019 Annual Research Meeting

Correlates of Colorectal Cancer Screening Rates in Primary Care Clinics

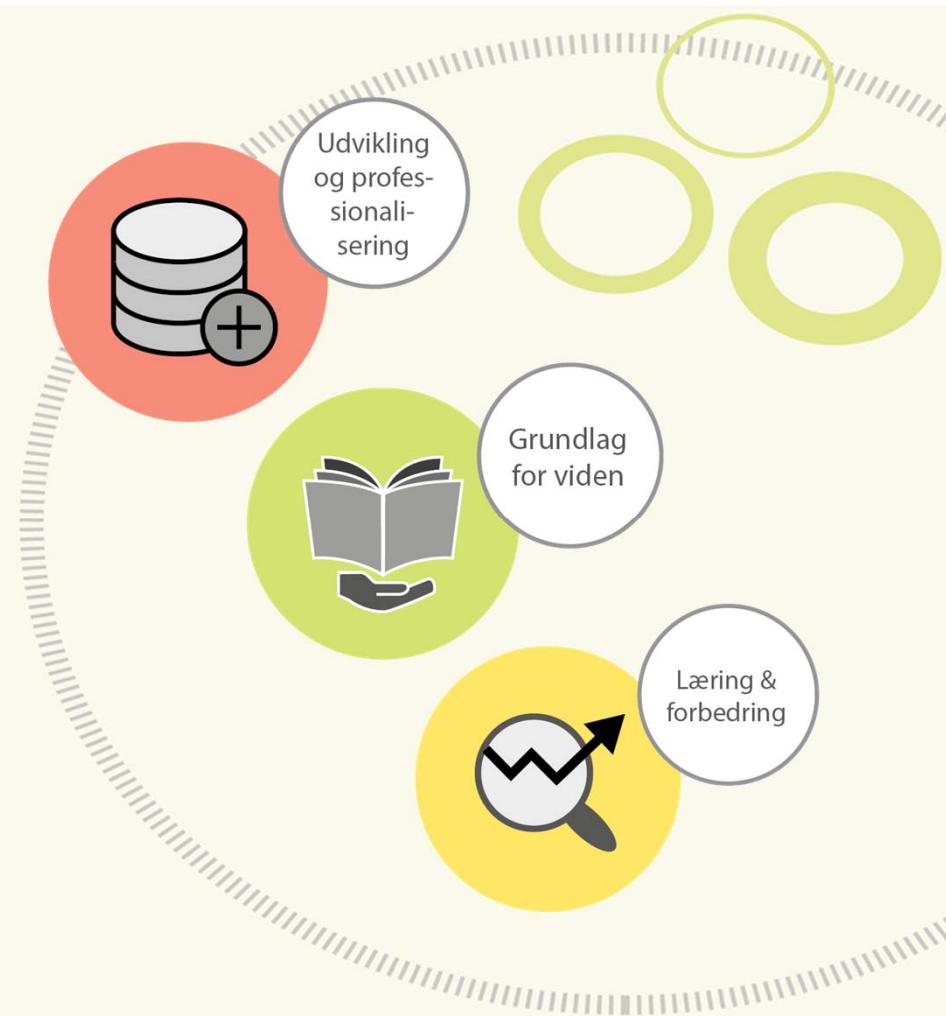
- Screening for colorectal cancer (CRC) is effective in reducing CRC burden
- Primary care clinics have an important role in increasing screening rates.
- Investigated the association between clinic-level CRC screening rates and clinic-level screening interventions, clinic characteristics, and community context
- Evidence based interventions implemented in primary care clinics are positively associated with screening

[Correlates of Colorectal Cancer Screening Rates in Primary Care Clinics](#)
Krishna Sharma, Phd et al



Viden til et bedre sundhedsvæsen

RKKP strategi 2019-2022



Dyrke og styrke RKKPs specielle position og kompetence

- Klinisk forankring
- Analyse kompetence
- Tidstro data
- Minimering af registreringsbyrde
 - Integration i EPJ systemer



Klinisk
forankring



Analyse
kompetence

Kvalitet ind på ledelsesbordet!

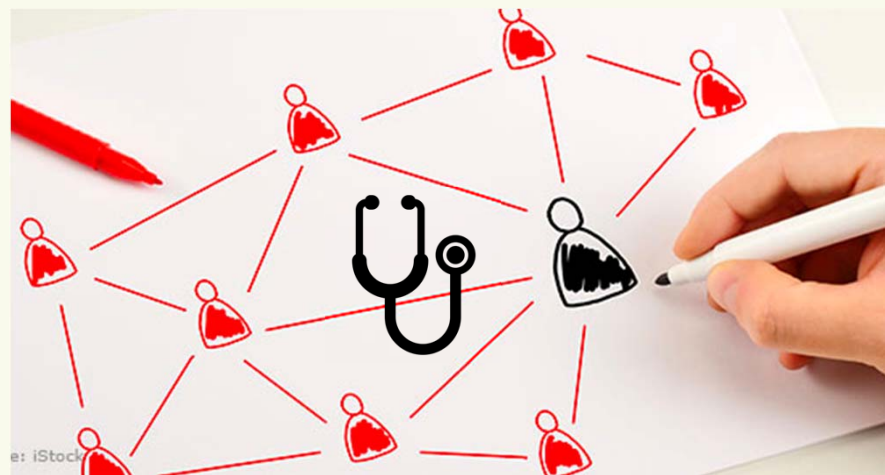
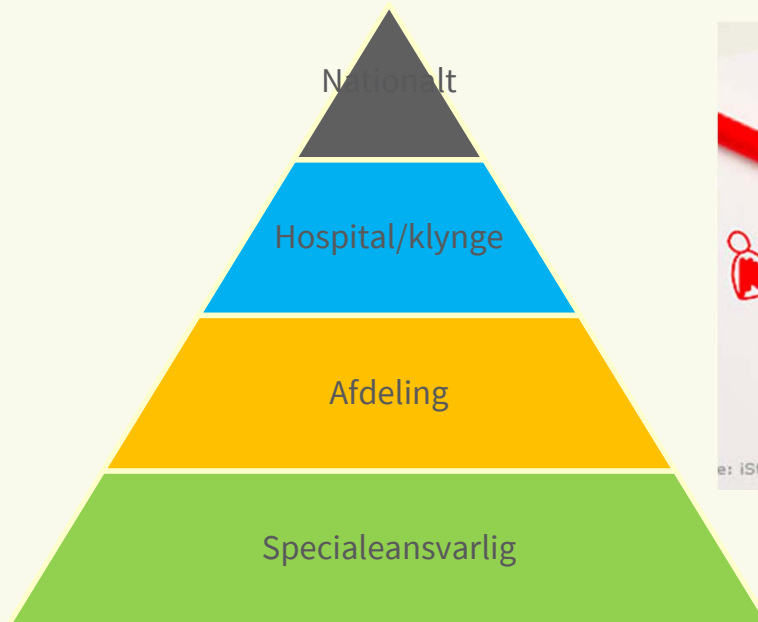


Men ikke væk fra de faglige miljøer

Hierarki

vs

Økosystem



Kvalitetsudvikling og forskning traditionelt set som adskilte indsatser

Forskning



Kvalitet

Forskning og kvalitetsudvikling: case cervix cancer kirurgi

Randomiseret studie

Phase III Randomized Trial of Laparoscopic or Robotic Radical Hysterectomy vs. Abdominal Radical Hysterectomy in Patients with Early-Stage Cervical Cancer: LACC Trial

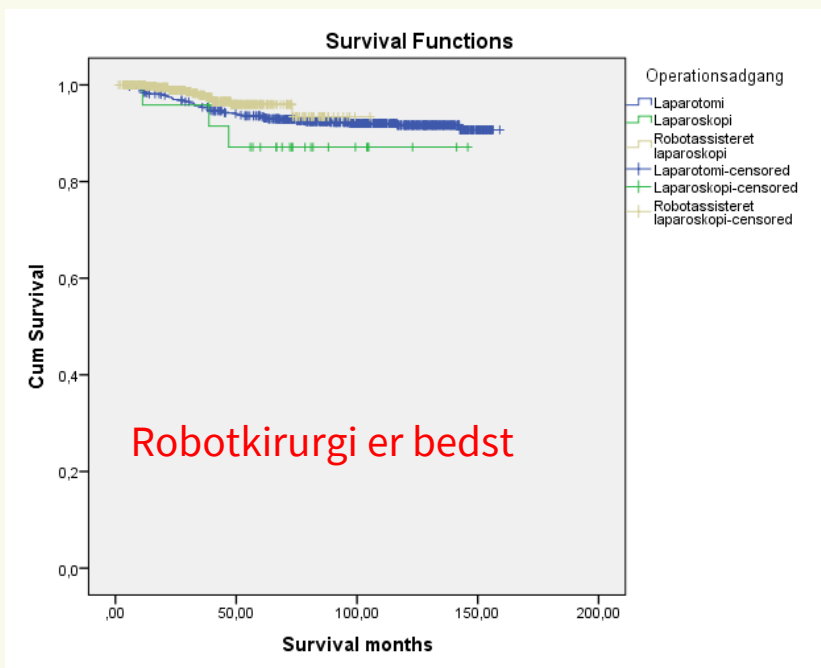
Pedro T. Ramirez, Michael Frumovitz, Rene Pareja, Aldo Lopez, Marcelo Vieira, Reitan Ribeiro, Alessandro Buda, Xiaojian Yan, Kristy P Robledo, Val GebSKI, Robert L Coleman, Andreas Obermair



Bringing Together the Best in Women's Cancer Care

Åben kirurgi er bedst

Real world data DGCD



I det lærende sundhedsvæsen er det to sider af samme sag



Her bor vi

RKKP's Videntcenter er fysisk placeret på tre adresser:

Frederiksberg Hospital

Ndr. Fasanvej 57
Vej 3, indgang 4
2000 Frederiksberg

Odense Universitetshospital

Klørvænget 30
Indgang 216, st.
5000 Odense C

Regionshuset Aarhus

Olof Palmes Alle 15 (besøgsadresse i nr. 25)
8200 Aarhus N