

DANSKE KRÆFTFORSKNINGS DAGE 2022

Strålebehandling af patienter med rectumcancer - en ny organbevarende modalitet

Laurids Ø. Poulsen, overlæge, ph.d., Onkologisk Afdeling, Aalborg
Universitetshospital. Formand for radioterapiudvalget under DCCG

#DKD2022

#SamarbejdeOmKræft

Sli.do

#131525



High-dose chemoradiotherapy and watchful waiting for distal rectal cancer: a prospective observational study



Ane L Appelt, John Pløen, Henrik Harling, Frank S Jensen, Lars H Jensen, Jens C R Jørgensen, Jan Lindebjerg, Søren R Rafaelsen, Anders Jakobsen

Summary

Background Abdominoperineal resection is the standard treatment for patients with distal T2 or T3 rectal cancers; however, the procedure is extensive and mutilating, and alternative treatment strategies are being investigated. We did a prospective observational trial to assess whether high-dose radiotherapy with concomitant chemotherapy followed by observation (watchful waiting) was successful for non-surgical management of low rectal cancer.

Lancet Oncol 2015; 16: 919-27

Published Online

July 6, 2015

[http://dx.doi.org/10.1016/](http://dx.doi.org/10.1016/S1470-2045(15)00120-5)

[S1470-2045\(15\)00120-5](http://dx.doi.org/10.1016/S1470-2045(15)00120-5)



Phase 2 WW2 Study (NCT02438839)

Key Eligibility Criteria

- rectal cancer 0-6 cm
- T1-3 N0-1 M0
- PS 0-2
- adequate organ function

Chemoradiation

- 62 Gy to the tumor
- 50.4 Gy to the regional lymph nodes
- 28 fractions
- Intensity-modulated radiation therapy
- Daily image guidance
- Capecitabine 825mg/m² BID

cCR

- Follow-up without surgery

Not cCR

- Surgery

Complete clinical response cCR

6 (12) weeks from end of treatment

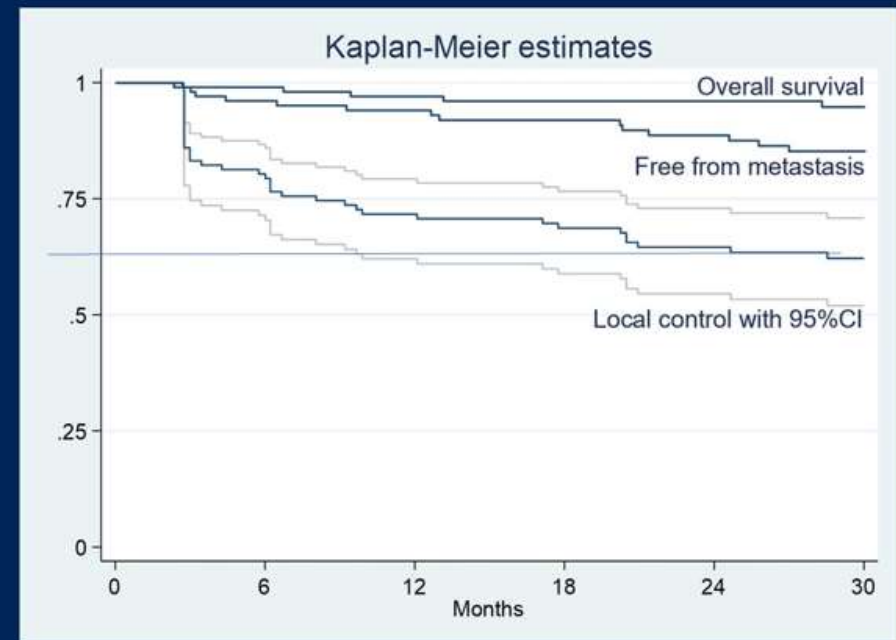
- No obvious tumor by inspection and palpation
- No malignant cells in biopsy from the tumor bed
- No obvious residual tumor or lymph node metastases on MRI

All patients:

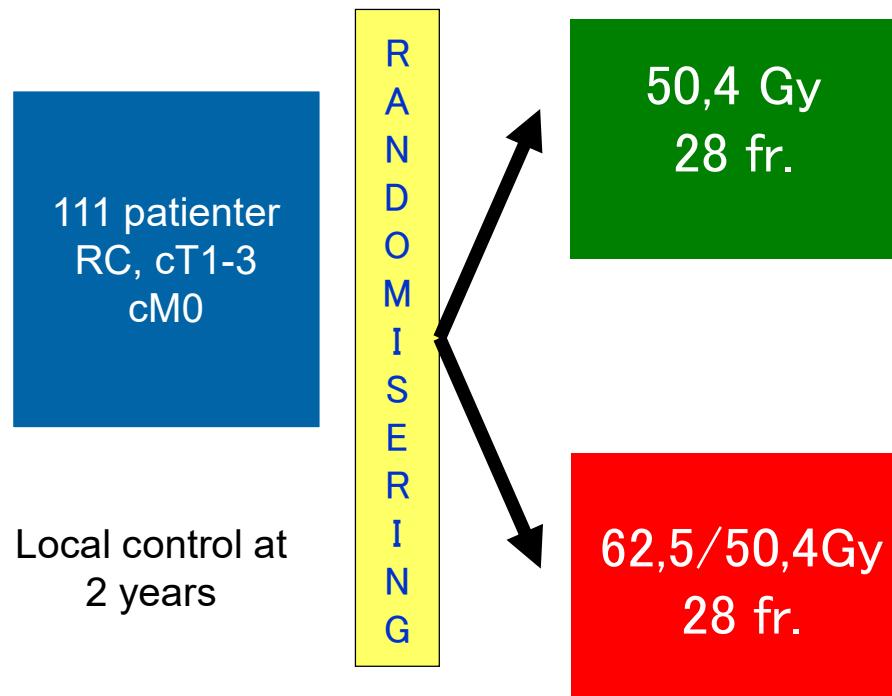
Recurrence, toxicity, PRO and survival follow-up

Time-to-events estimates

- Estimates of
 - Locoregional control (with 95% CI)
 - Free from metastasis
 - Overall survival
- From date of inclusion
- First evaluation 6 weeks after radiotherapy
- Second evaluation 12 weeks after radiotherapy



The Watchfull Waiting 3 trial – WW3





VIDENSKAB | Statusartikel | 13/01/2019 KL 8:00

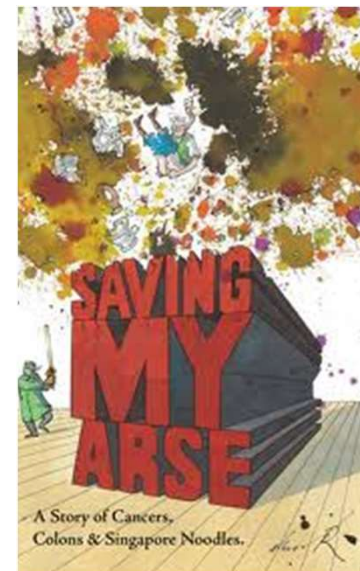
Stigende incidens af kolorektal cancer blandt yngre patienter

[Del](#) [Tweet](#)

Forfatter(e) Luyi Cai¹, Astrid Louise Bjørn Bennedsen¹, Camilla Qvortrup² & Ismail Gögenur¹ 1) Kirurgisk Afdeling, Center for Surgical Science, Sjællands Universitetshospital 2) Onkologisk Afdeling, Rigshospitalet
Ugeskr Læger 2019;181:V09190524



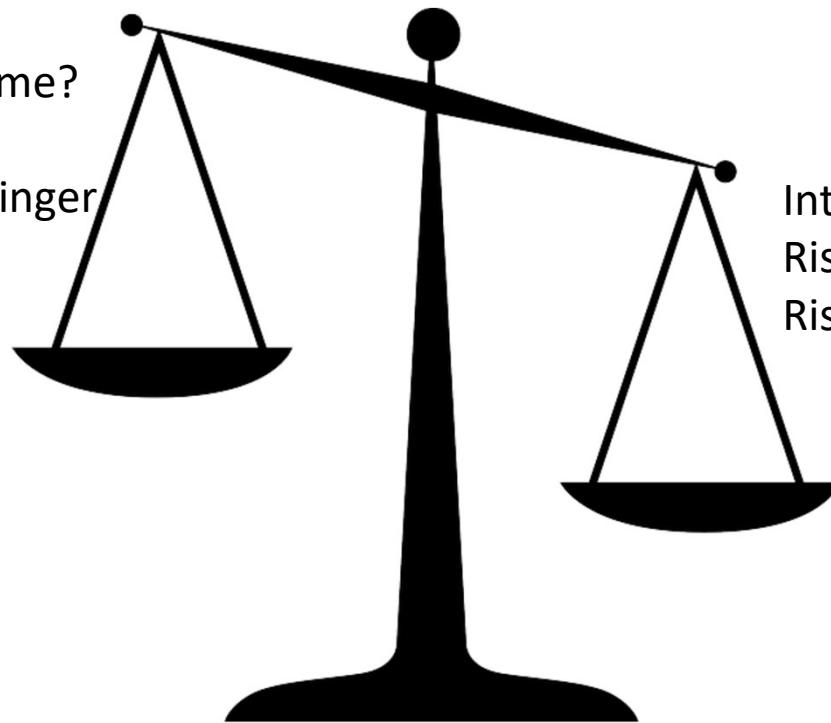
Patientpræferencer



70/30

En individuel afvejning

Bedre funktionelt outcome?
Undgå stomi
Undgå kirurgiske bivirkninger



Intents follow-up
Risiko for recidiv
Risiko for overbehandling

Status 2022:

- **WW3 inklusion er fortsat åben**
- **Hvilke resultater skal vi have for at sige noget er "standard"?**
- **Kan vi bruge kvalitetsdatabaserne bedre?**



Spørgsmål?

*Laurids Ø. Poulsen
Onkologisk Afdeling
Aalborg Universitets Hospital
laop@rn.dk*