



Prognostic impact of circulating methylated Homeobox A9 DNA in patients undergoing treatment for recurrent ovarian cancer

Louise Faaborg

MD, 'PhD studerende'

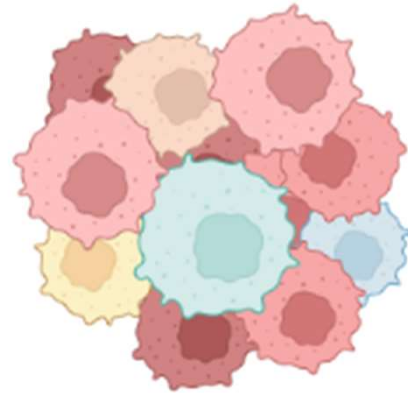
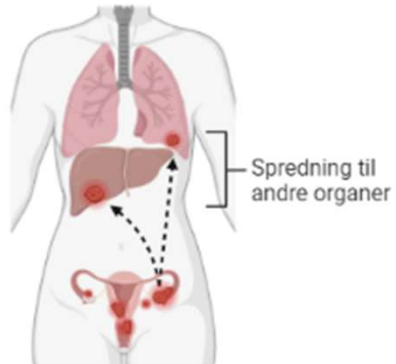
Onkologisk Afdeling, Vejle

Sygehus Lillebælt – Syddansk Universitetshospital

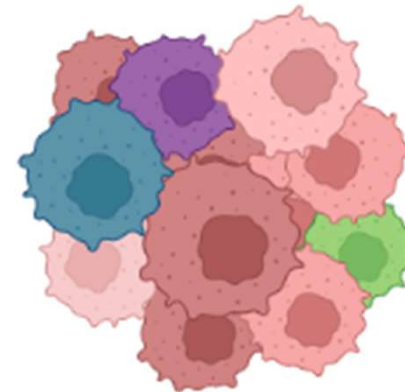


Udfordringerne ved ovariecancer

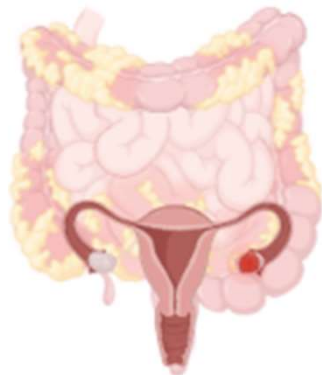
Stadium 4 | Spredning udenfor abdomen (fjernmetastaser)



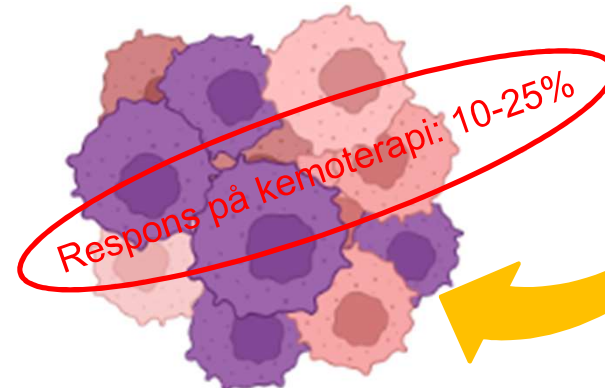
Patient 1



Patient 2



Omfattende operation

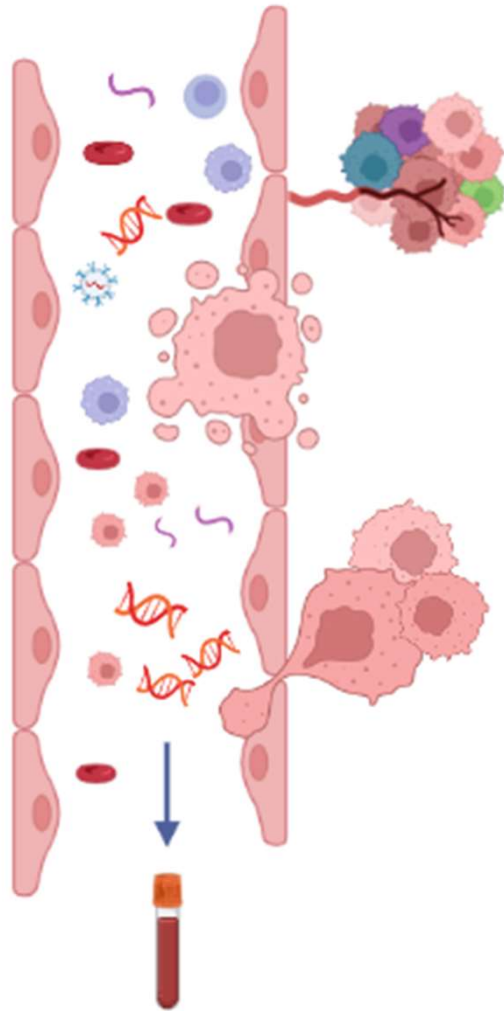


Recidiv af sygdom, resistente cellelinier

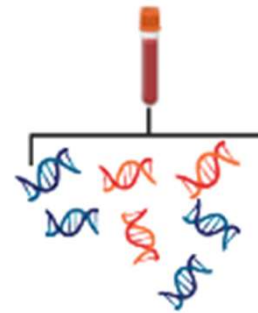




Tumorerne frigiver DNA til cirkulationen (ctDNA)

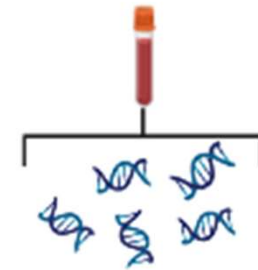


83/126 (65,9%)



9 måneder

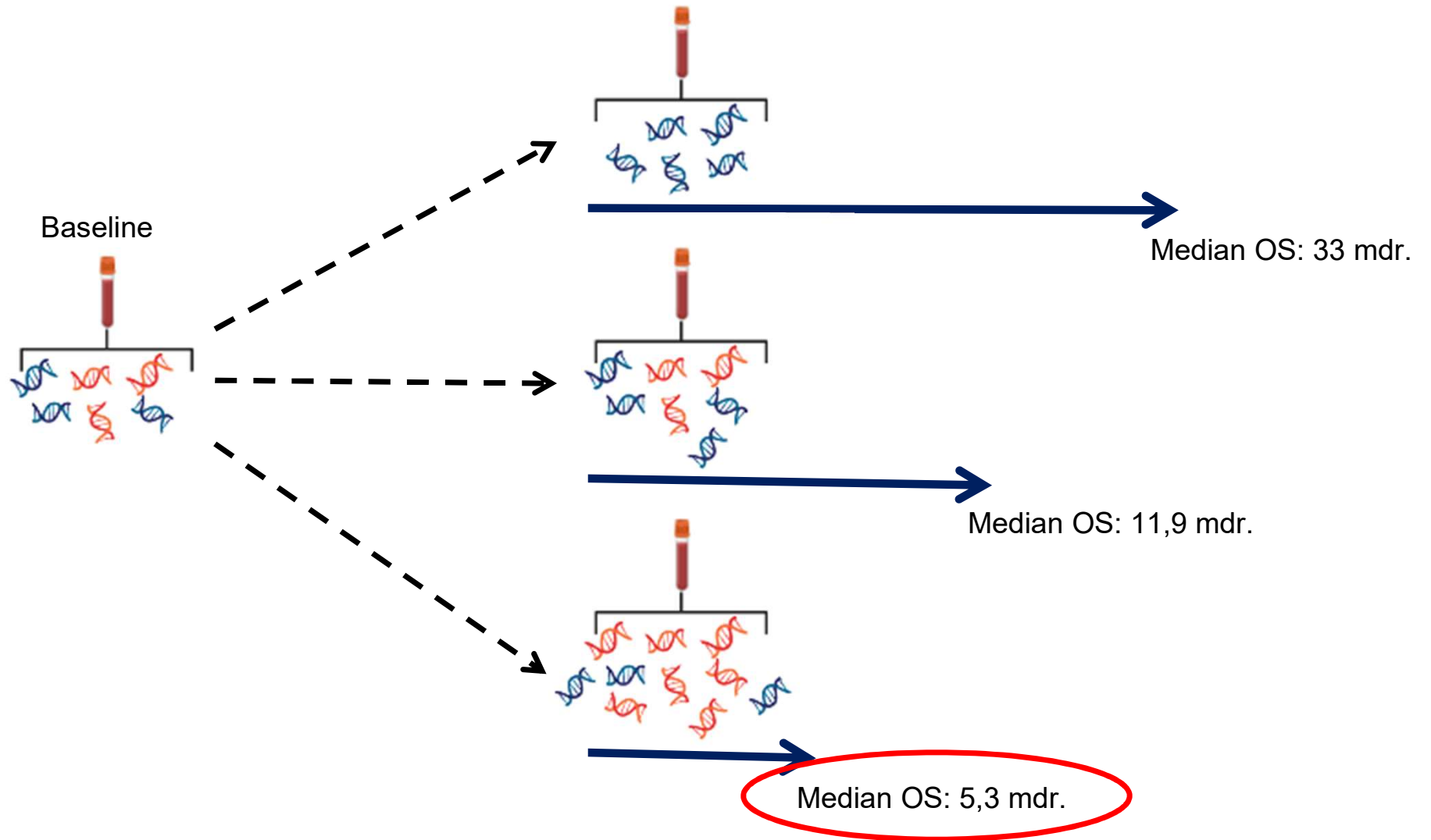
43/126 (34,1%)



18 måneder



ctDNA efter én serie kemoterapi





TAK

Finansiering:

NEYE Fonden

Region Syddanmarks PhD pulje

SDU - Stipendium

Onkologisk Afdeling, Vejle Sygehus

Patienterne (I alle mine studier)



Louise Faaborg
MD, 'PhD studerende'

Onkologisk Afdeling, Vejle

Sygehus Lillebælt - Syddansk Universitetshospital